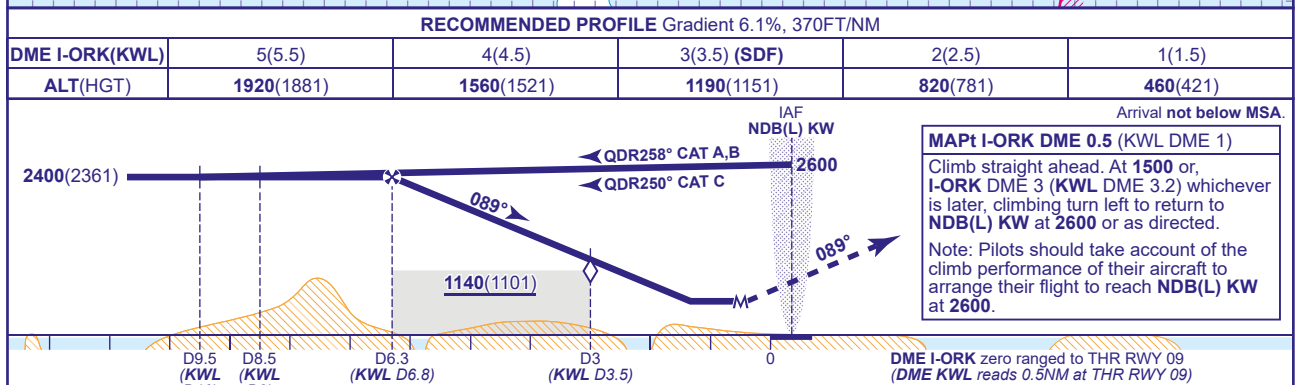


KIRKWALL
NDB(L)/DME
RWY 09
(ACFT CAT A,B,C)



ALTERNATIVE PROCEDURE
Arrival **not below MSA**. Overhead NDB(L) KW (IAF) at **2600** turn to establish on the outbound leg of the holding pattern. Extend the outbound leg of the hold descending to **2400**. At I-ORK DME 8.5 (KWL DME 9) (CAT A,B) or I-ORK DME 9.5 (KWL DME 10) (CAT C) turn right to establish on the extended FAT; when established continue as for basic procedure.

If required, the Base Turn procedure may be entered after holding by flying a teardrop reversal manoeuvre from overhead the holding facility after flying inbound in the hold as follows: Fly outbound on track 100°M (CAT A,B) or 119°M (CAT C) for 1 MIN then turn left to return to the overhead to enter the base turn procedure. Lowest altitude to commence procedure from the hold is **2600**.

AERO INFO DATE 04 AUG 21

AD 2-EGPA-8-5